

Oversized Cargo

How do you know if your shipment has excess dimensions?

A cargo is said to be in excess of dimensions when it exceeds the regular capacity in weight and measurements for a spot in the main deck of an airplane.



When the goal is to send cargo via an airplane you must consider the fact that **there are planes specially designed to haul cargo exclusively**. These airplanes, unlike so called “mixed” airplanes (commercial planes which transport both passengers and cargo) possess certain characteristics that improve their functionality. One of those characteristics is a larger cargo capacity: up to 107 tons, with a volume of 699 m³ (24,685 ft³).

Mixed airplanes for assorted cargo only have a capacity of 15m³ (529.72ft³) and can carry a weight of up 2 tons of cargo; likewise, mixed planes that can carry a line of pallets have a cargo capacity in the 83 m³ (2931.1ft³) range and can only carry a maximum of 13 tons.



When your freight forwarder consigns your shipment via commercial flight, you should be aware that the passengers luggage and perishable cargo is priority. Dry cargo is not priority. The airline will load your shipment when they have enough space. There is a risk that dry cargo can wait for a couple of days until there is enough space to be uploaded.

The airline is who designates where a shipment goes inside the plane when using this type of transportation for your merchandise.

However, it is very useful to know ahead of time the measurements in each part of the plane. This way you can avoid some unpleasant surprises.



● Bottom half

Commonly referred to as the “belly”, is **the part of the plane with less capacity**. Therefore, the mandatory weights and measurements are 80x80x80 cms (31.5x31.5x31.5 in) and the weight must be less than 100 kilograms.

● Top half

This half has a larger space to transport merchandise. It **is usually divided in 8 sections**, each with the following measures: 3 x 2 x 2 meters (118.11x78.74x78.74 in), and with a weight capacity of 2 tons per section.

However, the usable space is always less. This is the reason why if a shipment exceeds 1 x 1.20 x 1.40 meters alto (39.37x42.24x55.12 in) or has a weight over half a ton (500 kg) is considered as excess weight.



In case this happens, it is necessary that **the freight get special handling and it may be transferred to another cargo position**. In addition, you must take into consideration other factors that are very necessary in order to avoid damage to your shipment.



1 Companies that function as logistics operators must be verified in the industry in which they claim to participate in. They must be **properly registered in their country's chamber of commerce and they must also be controlled by the appropriate union and by certifying authorities** such as the Inter American Transportation Chamber (CIT) for those that work in the American continent or the GS1.



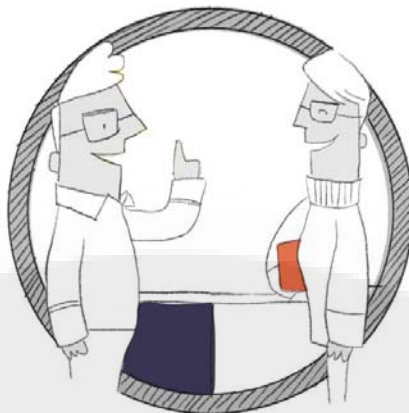
2 When dealing with boxes destined for trade shows which contain fragile or easy to damage equipment it is very important to **use proper labels (this side up, do not get wet, handle with care, etc)** The material used to protect the merchandise inside the boxes must be a cushion and must prevent the merchandise inside the box in order to avoid any scratching.



3 It is necessary to check that the cargo companies have their **insurance up to date**. This is so for both the freight company and its subcontractors. **Their personnel must also possess the corresponding qualifications and certifications.**

4 Communication with the logistics department is of the utmost importance in order to **prevent any damages to the merchandise during transit**. It is necessary to keep the personnel informed regarding the measurements and the contents of your cargo. Likewise, they must be informed of the **specific instructions of your shipment**. Those instructions include, but are not limited to, specific box positioning and how to handle the merchandise.





EXHIBITIONS CARGO has assembled its own network of partnerships with the most experienced and respected **Customs Brokers and Freight Forwarders at the top meeting destinations of the globe.** We are specialized in the Meetings, Incentives, Conventions and Exhibitions industry. We handle the entire shipping process of any volume of cargo, from your door to the event site. We work to get your equipment and materials out and back from your international venue as smoothly and quickly as possible.



**exhibitions
Cargo®**

**Contact us for more useful
information at:**

E-mail:

info@exhibitions cargo.com

www.exhibitions cargo.com

+1 (619) 793 5414

+1 (312) 373 9257

*All the names of the products, logos, brands, images and trademarks that are in use in this website/pamphlet are the property of their rightful owners. They are not affiliated with Exhibitions Cargo, our products and/or our website. FedEx, UPS, etc do not sponsor or endorse Exhibitions Cargo or any of our products or affiliates. Therefore, no link or commercial agreement should be assumed between any of these companies and Exhibitions Cargo. of their respective owners and are not affiliated, endorsed, connected or sponsored in any way to this website or any of our affiliates; therefore do not be confused between Exhibitions Cargo and FedEx etc.